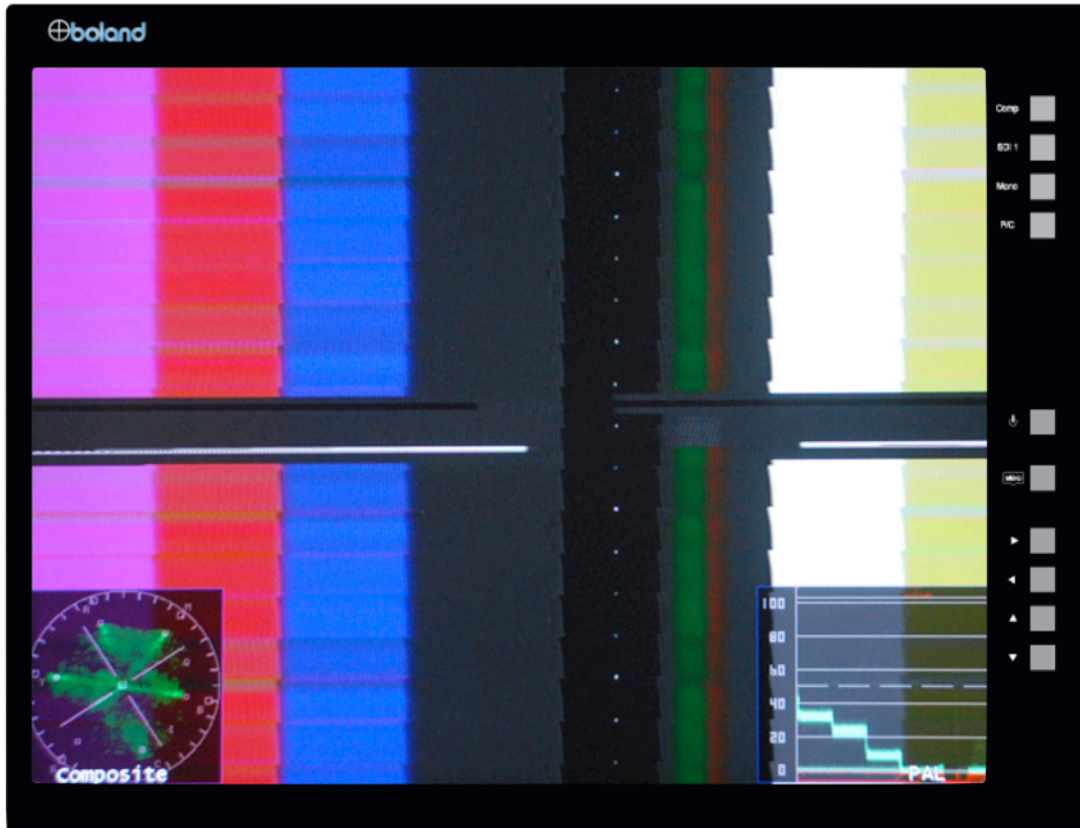




# SE-15VTR replaces your VTR's CRT Monitor!

Displays Quad and Helical anomalies that other LCD monitors cannot!

Like this skewing error on an Ampex AVR-2 Quad VTR



Screen image is actual AVR-2 playback.



**Boland's new SE-15VTR is a direct replacement for CRT monitors in Overbridges, Consoles and Racks**

**Analog and Digital inputs make easy monitoring of:**

- ✓ Direct tape analog output
- ✓ Checking the VTR's analog to SDI converter output
- ✓ Reviewing digitized files for QC at the VTR before unranking tape.

**Easier pickups after glitches because you can see the captured files at the VTR using SDI from the capture device**



Headed by  
a Quad VTR Engineer



Order from  
[www.flashscan8.us](http://www.flashscan8.us)  
(530) 301-2931

Authorized Boland Dealer  
Flip over for technical details

## SPECIFICATIONS

Active Area (Diagonal): 15.3" / 39.0 cm

## MODES

High & Standard Definition Video Modes:  
1080/720/576/480 @23/24/25/29/30/60 i/p/sF  
Digital and Analog (autoselected), VESA VGA &  
DVI/HDMI  
PC Video Modes: EGA, VGA, SVGA, XGA, WXGA,  
SXGA, WSXGA, UXGA, WUXGA  
Standard Definition Video Modes: NTSC/PAL/  
SECAM/NTSC4.43/PAL-M (autoselected)  
Scanning Modes: Under/Over Scanning

## INPUTS

Two Digital Video Inputs: 3G/HD/SD SDI (SMPTE  
259M/292/296), One HDMI & DVI (+HDCP)  
HDMI/DVI Digital Video Inputs: Digital Visual  
Interface, Single-Link, VESA & SMPTE Rates  
Analog: One BNC Comp. Loop w/auto term.,  
PC VGA (EIA, CCIR, VESA, SMPTE 274)

## PICTURE

Aspect Ratios: 16:9, 4:3, Letterbox, and (de-)  
Anamorphic, Fixed and Variable Aspect Ratio  
Images  
Pixel (RGB Trio) Arrangement: 1280 x 768 Vertical  
Stripe (786,432 Pixels, 1 pixel=R+G+B)  
Pixel (RGB Trio) Pitch, Depth: 0.087 H x 0.261 V  
mm  
Brightness, typical, 0°: 330 nts (cd/m<sup>2</sup>) (High  
Brite)  
Contrast Ratio, 0°: 1000:1 (high contrast)  
Color Bit Depth: 16.7 million colors (10-bit Digital  
Processing)  
Viewing Angle, contrast>10:1: H: 176°, V: 176° (wide angle)  
Response Time: 14/11 ms (high speed)  
Standard Definition Video Resolution: 450 TVL

## CONTROLS

User Controls: On/Off, Menu System: Step, Increment, Decrement, Hot  
Keys  
Remote Controls: TCP/IP, RS-232 (bi-direx), and InfraRed (IR)

## BACKLIGHT

Light Source (standard): Color-Match Fluorescent Lamps, Five Variable  
Color Temperature Adjustment Menus  
Lamp Life: 50,000+ Hrs

## CONNECTORS

Video Connectors: BNC  
HDMI/DVI Connectors: Up to 1920 by 1080P (HDMI support)  
VGA/PC Connector: DE-15HD-F (detachable 10' M/M cord)  
Audio Connectors (Optional): 3.5mm Stereo, Input and Output (1 watt x 2  
for external amplifier/speakers)

## POWER

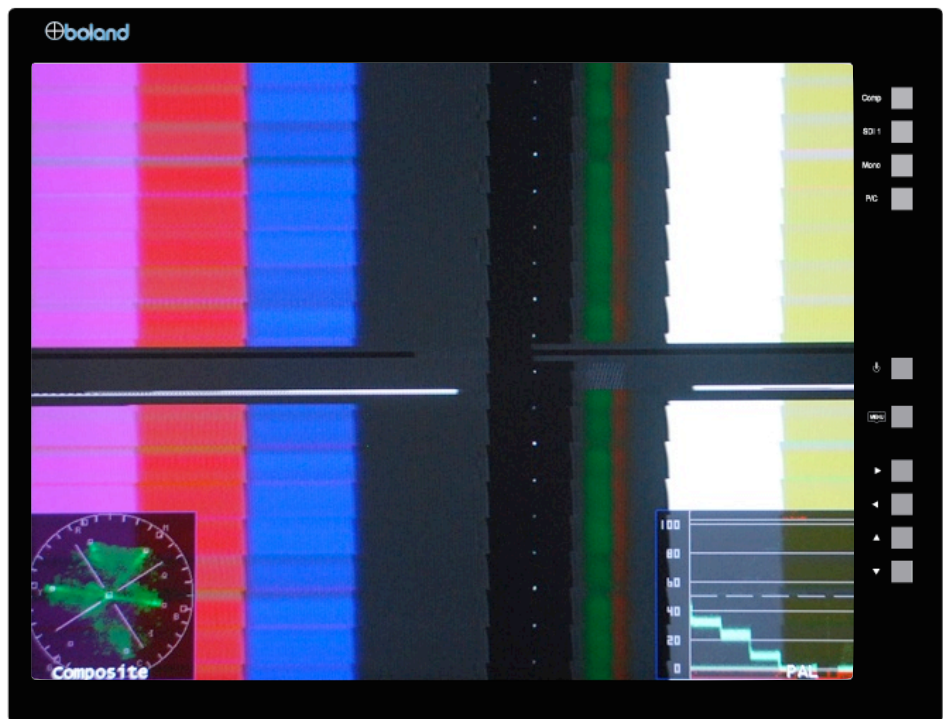
DC Power: 12 volts (10.0 - 15.0 v), 40 watts (or 9~36 VDC with option 2003)  
DC Connector: XLR4-M (locking) (pin 1=gnd, 4=+volts)  
AC Power (detached power supply included): 90-264 VAC, 46 watts max  
AC Power Connector: IEC-320-C14 3 pin Male (universal)

## DISPLAY

Window (Display Area): 12.046 x 9.042" / 305.969 x 229.667 mm (SE-15VTR)  
Cabinet Dim's: 13.695 x 10.470 x 1.962" / 366 x 265.938 x 49.8 mm  
Weight: 6.4 lbs / 2.9 kg (without stand, power supply, or rackmount)  
Mounting / Rackmounting: 10-32 & VESA 100; Options: RM Ears (7 RU  
high); RM Frame (6 RU high)  
Operating (full spec): -10 ~ +70°C @ 10-90% RH (dependent upon temp),  
no condensation, 10,000 ft. / 3000 m  
Storage: -20 ~ +80°C @ 10-90% RH (dependent upon temp), no  
condensation, 40,000 ft. / 12000 m  
Case Color & Material: Textured Semi-Gloss Black Powder Hard Coat,  
Aircraft Aluminum  
Available Options: Desktop Stand, Rackmount Ears or Frame, Tilting /  
Rotating Wall Mount Bracket  
Approvals: RoHS (Pb) Compliant Product, High Vibration Environment  
Approved



## SE-15VTR LCD Monitor for VTRs



**Be more productive, and save money in the long run:  
Stop trying to acquire and keep CRTs maintained and calibrated.**

**Put the SE-15VTR in your VTR Monitor Bridge.**

**Monitor Analog from the VTR and SDI from your A/D converter, and  
SDI coming back from your Digital Capture Device for "at the source"  
Quality Control of the digitization process.**



SE-15VTR Display shows actual video from Ampex AVR-2 Quad.  
Photoshopped examples of cabinet-Actual appearance may vary

Order from **flashscan8.us**

[www.flashscan8.us](http://www.flashscan8.us) (530) 301-2931 Authorized Boland Dealer